

1B Pongal



- A Govardhan Puja**
- B Pongal**
- C Holi**
- D Vishu (ind. Neujahr)**

1C Holi



- A Govardhan Puja**
- B Pongal**
- C Holi**
- D Vishu (ind. Neujahr)**

1A Govardhan Puja



- A Govardhan Puja**
- B Pongal**
- C Holi**
- D Vishu (ind. Neujahr)**

1D Vishu (ind. Neujahr)



- A Govardhan Puja**
- B Pongal**
- C Holi**
- D Vishu (ind. Neujahr)**

2A Geburt Buddhas



- A Geburt Buddhas**
- B Navaratri - Durga Puja**
- C Divali**
- D Geburt von Krishna**

2B Navaratri - Durga Puja



- A Geburt Buddhas**
- B Navaratri - Durga Puja**
- C Divali**
- D Geburt von Krishna**

2C Divali



- A Geburt Buddhas**
- B Navaratri - Durga Puja**
- C Divali**
- D Geburt von Krishna**

2D Geburt von Krishna



- A Geburt Buddhas**
- B Navaratri - Durga Puja**
- C Divali**
- D Geburt von Krishna**

3B Shiva



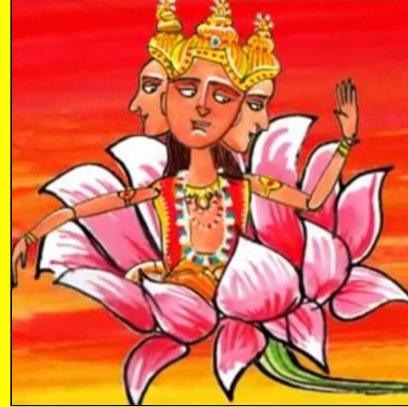
- A Brahma**
- B Shiva**
- C Vishnu**
- D Ganesha**

3C Vishnu



- A Brahma**
- B Shiva**
- C Vishnu**
- D Ganesha**

3A Brahma



- A Brahma**
- B Shiva**
- C Vishnu**
- D Ganesha**

3D Ganesha



- A Brahma**
- B Shiva**
- C Vishnu**
- D Ganesha**

4A Krishna



- A Krishna**
- B Rama**
- C Hanuman**
- D Durga**

4B Rama



- A Krishna**
- B Rama**
- C Hanuman**
- D Durga**

4C Hanuman



- A Krishna**
- B Rama**
- C Hanuman**
- D Durga**

4D Durga



- A Krishna**
- B Rama**
- C Hanuman**
- D Durga**

5A Geburt



- A Geburt**
- B Heilige Schnur**
- C Hochzeit**
- D Bestattung**

5B Heilige Schnur



- A Geburt**
- B Heilige Schnur**
- C Hochzeit**
- D Bestattung**

5C Hochzeit



- A Geburt**
- B Heilige Schnur**
- C Hochzeit**
- D Bestattung**

5D Bestattung



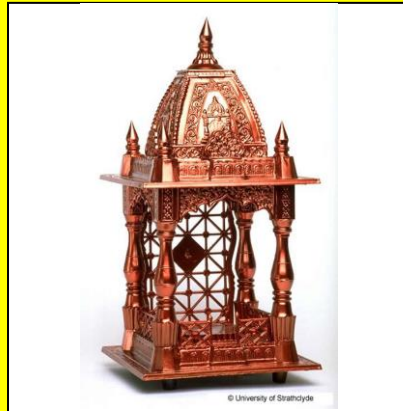
- A Geburt**
- B Heilige Schnur**
- C Hochzeit**
- D Bestattung**

6A Puja-Tablett



- A Puja-Tablett**
- B Zimmer-Tempel**
- C Aarti-Lampe**
- D Gebetsschnur**

6B Zimmer-Tempel



- A Puja-Tablett**
- B Zimmer-Tempel**
- C Aarti-Lampe**
- D Gebetsschnur**

6C Aarti-Lampe



- A Puja-Tablett**
- B Zimmer-Tempel**
- C Aarti-Lampe**
- D Gebetsschnur**

6D Gebetsschnur



- A Puja-Tablett**
- B Zimmer-Tempel**
- C Aarti-Lampe**
- D Gebetsschnur**

7A Brahmane



- A Brahmane (Priester)**
- B Mandir (Tempel)**
- C Glocken**
- D Feuer-Puja**

7B Mandir



- A Brahmane (Priester)**
- B Mandir (Tempel)**
- C Glocken**
- D Feuer-Puja**

7C Glocken



- A Brahmane (Priester)**
- B Mandir (Tempel)**
- C Glocken**
- D Feuer-Puja**

7D Feuer-Puja



- A Brahmane (Priester)**
- B Mandir (Tempel)**
- C Glocken**
- D Feuer-Puja**

8A Schrein



- A Schrein**
- B Murti (Götterpuppen)**
- C Opfergaben**
- D Im Heiligtum**

8B Murti



- A Schrein**
- B Murti (Götterpuppen)**
- C Opfergaben**
- D Im Heiligtum**

8C Opfergaben



- A Schrein**
- B Murti (Götterpuppen)**
- C Opfergaben**
- D Im Heiligtum**

8D Im Heiligtum



- A Schrein**
- B Murti (Götterpuppen)**
- C Opfergaben**
- D Im Heiligtum**

9A Om



- A Om
- B Nataraja
- C Schnecke
- D Flagge Indiens

9B Nataraja



- A Om
- B Nataraja
- C Schnecke
- D Flagge Indiens

9C Schnecke



- A Om
- B Nataraja
- C Schnecke
- D Flagge Indiens

9D Flagge Indiens



- A Om
- B Nataraja
- C Schnecke
- D Flagge Indiens

10A Heilige Orte



- A Heilige Orte
- B Heilige Männer
- C Heiliges Bad
- D Heilige Kuh

10B Heilige Männer



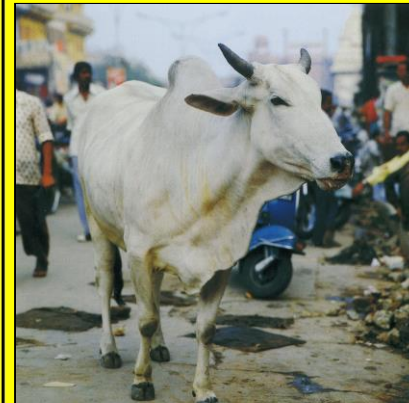
- A Heilige Orte
- B Heilige Männer
- C Heiliges Bad
- D Heilige Kuh

10C Heiliges Bad



- A Heilige Orte
- B Heilige Männer
- C Heiliges Bad
- D Heilige Kuh

10D Heilige Kuh



- A Heilige Orte
- B Heilige Männer
- C Heiliges Bad
- D Heilige Kuh

11A Gayatri

ॐ भूर्भुवः स्वः
तत्सवितुर्वरेण्यं
भर्गो देवस्य धीमहि
धियो योनः प्रचोढयात्

- A Gayatri-Mantra
- B Mahamrityunjaya
- C Panchakshara
- D Sarveshaam

11B Mahamrityunjaya

ॐ त्र्यम्बकं यजामहे ।
सुगन्धिम् पुष्टिवर्धनम् ॥
ॐ वारुणमिव बन्धनान् ।
मृत्योर्मुक्षीय मामृतात् ॥

- A Gayatri-Mantra
- B Mahamrityunjaya
- C Panchakshara
- D Sarveshaam

11C Panchakshara

ॐ
नमः शिवाय

- A Gayatri-Mantra
- B Mahamrityunjaya
- C Panchakshara
- D Sarveshaam

11D Sarveshaam

ॐ सर्वेषां स्वस्तिर्भवतु ।
सर्वेषां शान्तिर्भवतु ।
सर्वेषां पुर्णभवतु ।
सर्वेषां मङ्गलंभवतु ।
ॐ शान्तिः शान्तिः शान्तिः

- A Gayatri-Mantra
- B Mahamrityunjaya
- C Panchakshara
- D Sarveshaam

12A Varanasi

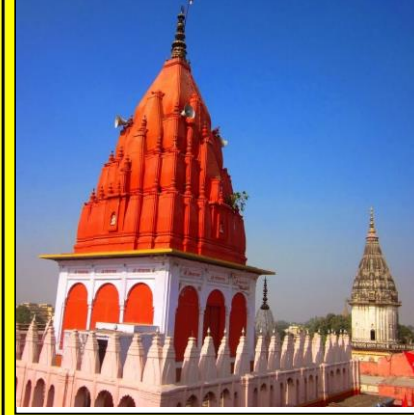
- A Varanasi
- B Haridwar
- C Dwarka
- D Ayodhya

12B Haridwar

- A Varanasi
- B Haridwar
- C Dwarka
- D Ayodhya

12C Dwarka

- A Varanasi
- B Haridwar
- C Dwarka
- D Ayodhya

12D Ayodhya

- A Varanasi
- B Haridwar
- C Dwarka
- D Ayodhya